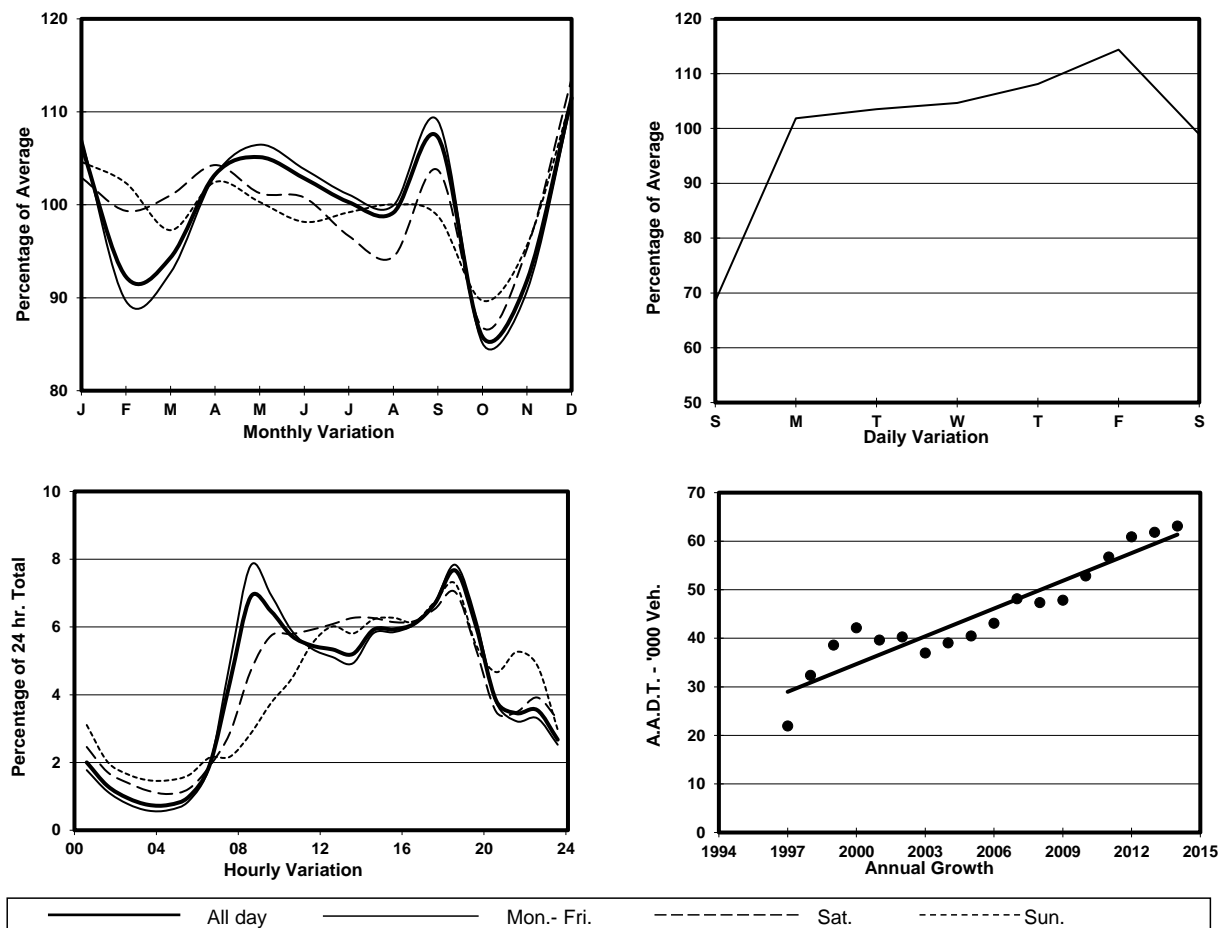


YEAR

2014

LINK WESTERN HARBOUR CROSSING (from TOLL PLAZA to  
SOUTH PORTAL)CORE STATION  
ROAD NETWORK  
ROAD TYPE1026  
MAJOR  
URBAN TRUNK ROAD

## 1. TRAFFIC FLOW VARIATION AND GROWTH



## 2. TRAFFIC CHARACTERISTICS (BY DIRECTION)

Parameter	All - Day	Mon. - Fri.	Sat.	Sun.
<b>SOUTH BOUND</b>				
A.A.D.T.	31410	34000	31690	21870
R 12 / 24 - %	74.4	76.5	71.1	63.5
R 16 / 24 - %	88.2	89.5	85.5	82.7
AM Peak Hour	0800-0900	0800-0900	0900-1000	0900-1000
One-way flow at AM peak hour	2730	3370	2320	890
T - % (AM)	-	16.2	-	-
PM Peak Hour	1800-1900	1800-1900	1800-1900	1800-1900
One-way flow at PM peak hour	2050	2190	2020	1610
T - % (PM)	-	8.3	-	-
Prop.of commercial vehicles - 16 hr.	-	10.2	-	-
<b>NORTH BOUND</b>				
A.A.D.T.	31720	34410	31630	22240
R 12 / 24 - %	69.1	70.2	67.9	62.9
R 16 / 24 - %	89	90.2	86.1	84.3
AM Peak Hour	0800-0900	0800-0900	0900-1000	0900-1000
One-way flow at AM peak hour	1620	1970	1320	770
T - % (AM)	-	10.9	-	-
PM Peak Hour	1800-1900	1800-1900	1800-1900	1800-1900
One-way flow at PM peak hour	2800	3170	2430	1600
T - % (PM)	-	10.6	-	-
Prop.of commercial vehicles - 16 hr.	-	9.6	-	-

## 3. OTHER INFORMATION AND COMMENT

**4. Vehicle classification and occupancy - Monday to Friday**

Time		Class of vehicle									
		Motor Cycle	Private Car	Taxi	Private LB	PLB	Goods veh.		Non Fr. Bus	Fr. Bus	
							Light	M & H		SD	DD
0700-0800	Pro	1.8	31.8	33.1	1.6	6.0	11.8	1.6	5.3	0.1	6.8
	Ocp	1.1	1.5	2.2	6.0	16.9	1.8	1.5	33.0	23.7	71.0
0800-0900	Pro	1.1	50.1	20.7	0.1	4.0	9.7	2.8	5.6	0.1	5.8
	Ocp	1.1	1.4	2.3	2.5	16.8	2.0	1.7	44.1	26.5	74.9
0900-1000	Pro	1.4	48.5	23.0	0.2	2.7	14.3	3.1	2.2	0.1	4.6
	Ocp	1.1	1.4	2.4	2.5	16.3	2.0	1.6	31.7	25.4	45.0
1000-1100	Pro	1.4	45.7	28.0	0.3	2.0	14.0	2.3	1.2	0.1	4.9
	Ocp	1.1	1.6	2.4	2.7	16.5	1.9	1.5	21.8	15.5	34.4
1100-1200	Pro	0.9	48.6	25.5	0.2	2.3	14.0	2.3	1.3	0.1	4.6
	Ocp	1.0	1.6	2.6	1.0	15.3	1.8	1.6	27.4	14.8	35.9
1200-1300	Pro	0.7	51.8	25.3	0.3	2.0	11.6	1.7	2.2	0.1	4.4
	Ocp	1.0	1.7	2.6	6.0	15.5	1.9	1.4	19.0	17.3	35.5
1300-1400	Pro	0.7	49.1	20.2	0.7	2.1	17.4	2.7	2.0	0.2	5.0
	Ocp	1.0	1.6	2.8	3.0	15.5	1.8	1.7	21.0	24.6	38.9
1400-1500	Pro	1.0	48.0	25.9	0.5	1.5	13.5	3.4	2.1	0.1	3.9
	Ocp	1.0	1.7	2.7	1.6	15.8	1.9	1.7	18.4	19.4	34.4
1500-1600	Pro	0.6	49.9	26.5	0.4	1.5	11.9	3.1	1.8	0.1	4.1
	Ocp	1.3	1.7	2.6	2.5	14.7	1.9	1.7	21.8	11.3	36.1
1600-1700	Pro	0.8	49.0	26.0	0.6	1.2	14.0	2.6	1.6	0.1	4.1
	Ocp	1.0	1.6	2.6	5.7	16.9	1.9	1.9	22.6	27.5	45.0
1700-1800	Pro	2.1	53.4	22.4	0.2	3.0	9.2	1.8	2.2	0.2	5.6
	Ocp	1.1	1.5	2.9	1.5	16.5	2.1	1.7	21.4	26.9	51.9
1800-1900 Peak hour	Pro	1.7	56.9	22.5	0.2	3.3	5.8	0.3	4.2	0.1	5.0
	Ocp	1.2	1.6	2.6	2.0	17.0	1.9	1.5	35.8	26.8	69.4
1900-2000	Pro	0.8	62.6	22.2	0.1	3.6	2.3	0.6	3.0	0.1	4.8
	Ocp	1.1	1.5	2.7	1.0	16.7	1.8	1.3	28.4	26.0	56.7
2000-2100	Pro	0.3	55.9	28.7	0.0	4.0	1.5	0.6	1.7	0.2	7.1
	Ocp	1.0	1.7	2.6	0.0	16.3	2.1	2.0	29.0	30.7	43.0
2100-2200	Pro	1.3	46.6	35.8	0.0	3.6	1.3	1.2	2.1	0.2	7.8
	Ocp	1.1	1.8	2.4	0.0	16.9	1.9	1.2	8.0	19.0	44.7
2200-2300	Pro	0.7	43.1	41.6	0.0	3.2	1.1	0.7	1.5	0.2	7.9
	Ocp	1.0	1.6	2.6	0.0	15.9	1.7	1.8	15.8	22.0	41.6
16 hours	Pro	1.1	50.4	25.5	0.3	2.8	10.0	2.0	2.6	0.1	5.2
	Ocp	1.1	1.6	2.6	3.7	16.4	1.9	1.7	29.9	22.8	49.7

**Legend**

**Pro.** Proportion of vehicles in % (Sum may not add up to 100% due to figure rounding)  
**Ocp.** Average occupancy of vehicles  
**M&H** Medium and Heavy